

Product Name: Ultra-Thin Silicone Nipple Shields

Materials: Silicone Nipple Shields - Food-Grade Silicone
Protective Case - PP

Dimensions: M - 72 × 62 × 35mm (18mm diameter opening)
L - 71 × 55 × 33mm (24mm diameter opening)
Protective Case - 70 × 70 × 35mm

Sizes: M/L

Contents: 2 × Silicone Nipple Shields
1 × Protective Case

Standard: EN 14350

Product Description:

Haakaa's Ultra-Thin Silicone Nipple Shields offer the perfect solution for mums with sore, raw nipples or who are experiencing minor discomfort while breastfeeding.

These nipple shields are an effective tool for helping mums with latching issues related to a premature or ill infant, flat or inverted nipples, tongue/lip tie, an overactive let-down, or just getting used to breastfeeding. Being ultra-thin, the super-soft silicone is warmed by your body heat to mould to your breast, providing a natural, comforting feel for both mum and baby.

Our Ultra-Thin Silicone Nipple Shields have two sizes to choose from to meet every mum's needs.

Features:

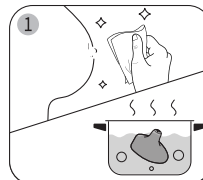
- Continue your breastfeeding journey without the worry of discomfort or pain.
- Ultra-thin, soft silicone warms with your body temperature to mould comfortably to your breast.
- Helps with feeding issues including cracked, sore or inverted nipples and latching difficulties.
- Unique cut-out shape allows for more skin contact between mum and baby.
- One-piece design made of 100% food-grade silicone.
- Two sizes to choose from to meet every mum's needs.
- Portable two-pack – always have a spare on hand.
- Protective case for hygienic and convenient storage between uses.
- BPA, PVC and phthalate free.

Cleaning and Care:

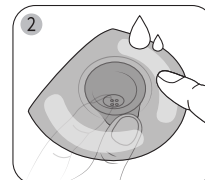
Before first use, clean shields in warm soapy water then boil in water for five minutes to sterilise. Do not boil or steam sterilise the protective case. Wash before and after each use. Although dishwasher safe, we recommend hand washing in warm soapy water and rinsing and drying thoroughly. To sterilise the shields, use a steam steriliser or boil in water for 2-3 minutes. Other common methods of cleaning, storage and use not listed in this manual may damage the product. Please do not use bleach-based cleaners or tablets to clean this product. Only soft bristle brushes or soft sponges should be used to clean this product. Store in the protective case with the nipple shields facing up. Store product in a cool, dry place and avoid direct sunlight.

PLEASE NOTE: This product helps mothers who breastfeed successfully but experience slight discomfort. It is only for use in the interim while your nipple heals or you address any issues, and only on the advice of a lactation consultant. Make sure that your nipple shield is the proper fit to ensure milk can flow freely and to avoid nipple damage.

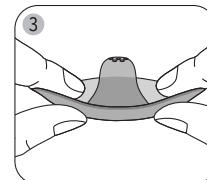
Instructions:



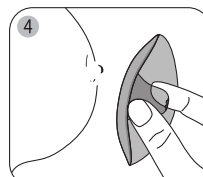
Before use, sterilise the shield in boiling water and ensure your hands & breasts are clean and dry.



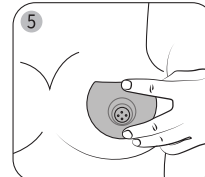
Before attaching to your breast, place a few drops of drinking-quality water or breast milk on the underside of the brim to help the shield stick to your skin.



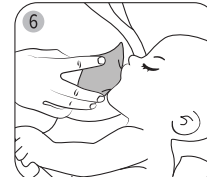
Holding the shield at the base of the nipple area, press nipple until shield is halfway inverted.



Rotate the shield so the cut-out area is placed where the baby's nose will be when feeding.



Centre the shield over your nipple, enclosing as much of your nipple as possible. Then, press the shield down onto your skin to flip it right side up. The base should sit flush against your skin.



With the shield applied, you can now breastfeed as normal.

Tip: Before attaching to your breast, express a few drops of milk into the shield. This will encourage your baby to accept the teat as they latch on.

Caution:

For your child's safety and health

WARNING!

- Always use this product with adult supervision.
- Never use the nipple shield as a soother/pacifier.
- Continuous and prolonged sucking of fluids will cause tooth decay.
- Keep components not in use out of the reach of children and pets.
- Inspect before each use, gently pulling the nipple shield in all directions. Throw away at the first signs of damage or weakness.
- Never attach to cords, ribbons, laces or loose parts of clothing. The child can be strangled.
- Do not store near any sharp objects.
- This product is not a toy. Do not use this product for anything other than its intended use.
- If problems or pain occur, consult your lactation consultant or physician.